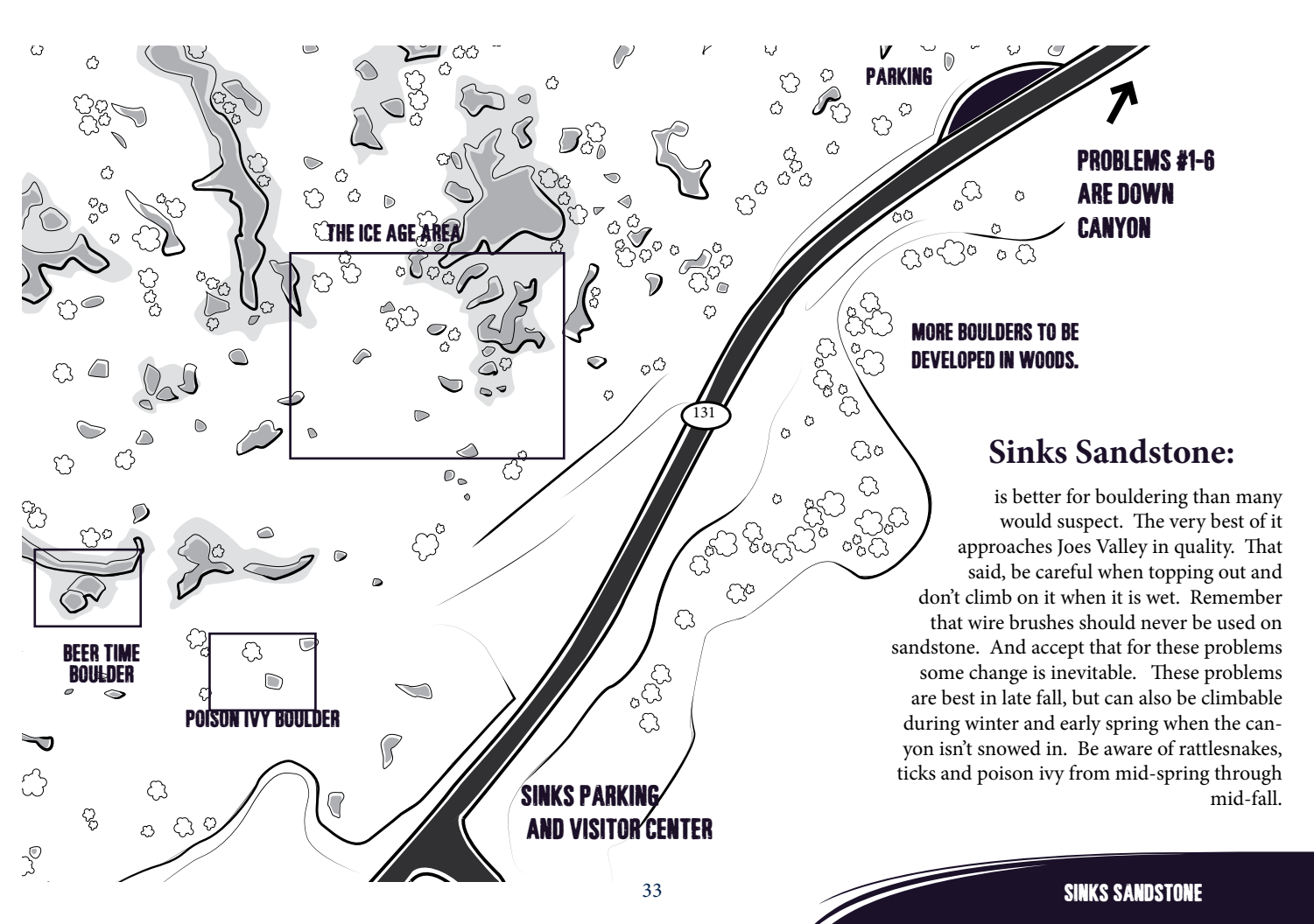




# SINKS CANYON SELECT ★ ★ SANDSTONE

Davin Bagdonas climbs Il Mammut at the Ice Age Area.



## Sinks Sandstone:

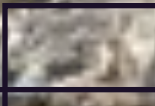
is better for bouldering than many would suspect. The very best of it approaches Joes Valley in quality. That said, be careful when topping out and don't climb on it when it is wet. Remember that wire brushes should never be used on sandstone. And accept that for these problems some change is inevitable. These problems are best in late fall, but can also be climbable during winter and early spring when the canyon isn't snowed in. Be aware of rattlesnakes, ticks and poison ivy from mid-spring through mid-fall.



# The Ice Age Area

The Ice Age area offers the most concentrated selection of sandstone problems in Sinks Canyon. This area was initially developed by Jeremy Rowan and then rediscovered on Thanksgiving weekend in 2009, ~ 8 years later.

THE HOLE DEAL



IL MAMMUT



WARM UP BOULDER



AIRETE

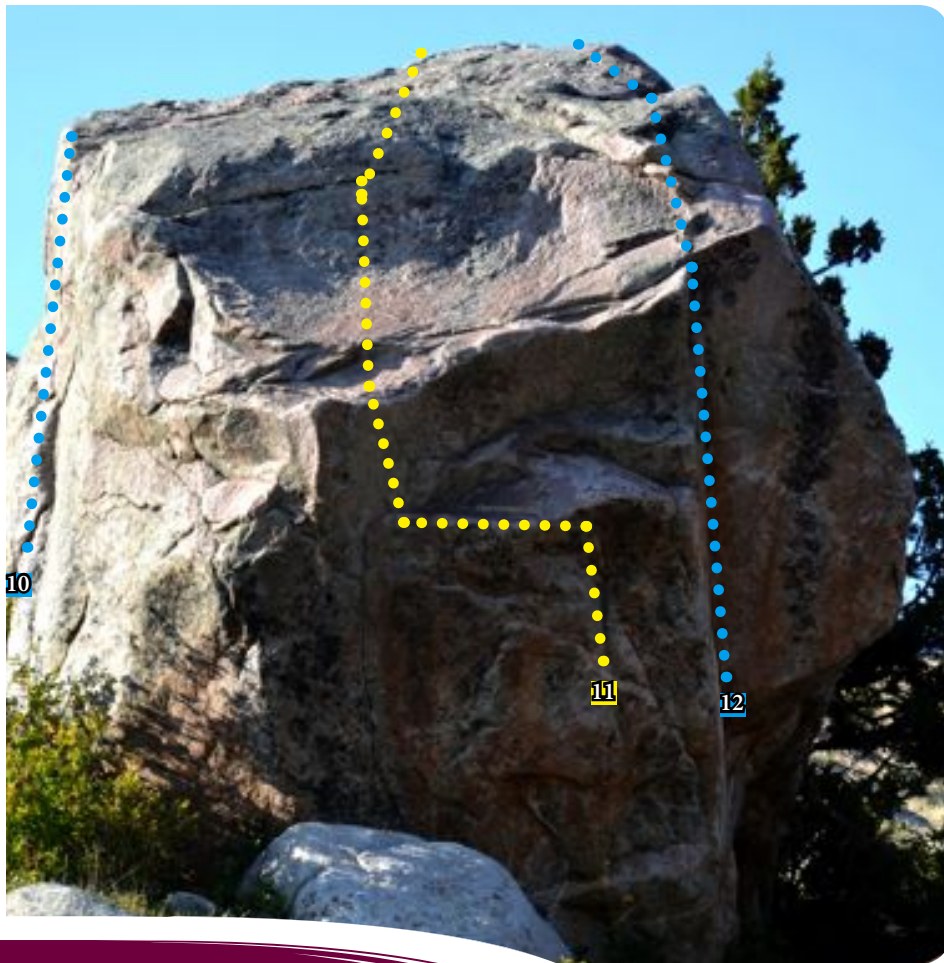


TUSK

THE SLOPER BOULDER







## Big Vision

*Big Vision is the tallest glacial erratic in Sinks Canyon. These high problems have been bouldered, but are often toproped using a two bolt anchor found on top. Reach the bolts by climbing the northeast arete.*

- **10. EBs in the 70s V3\*** Up the dike. I'm not sure that this has been climbed much since the 70s.
- **11. Power Animal V6\*\*\* HB** Jesse Brown cleaned and climbed this intimidating line up slippery rock.
- **12. Super Corner V4\*\* HB** Somewhat strange moves on slippery rock. When in doubt, rope up. Bolts on top.
- **13. High Slab V4** Just left of the tree is a lichen covered slab that has been bouldered.
- **14. NE Prow V0** The descent, or ascent to set up a toprope.

## THE CABIN BOULDERS

